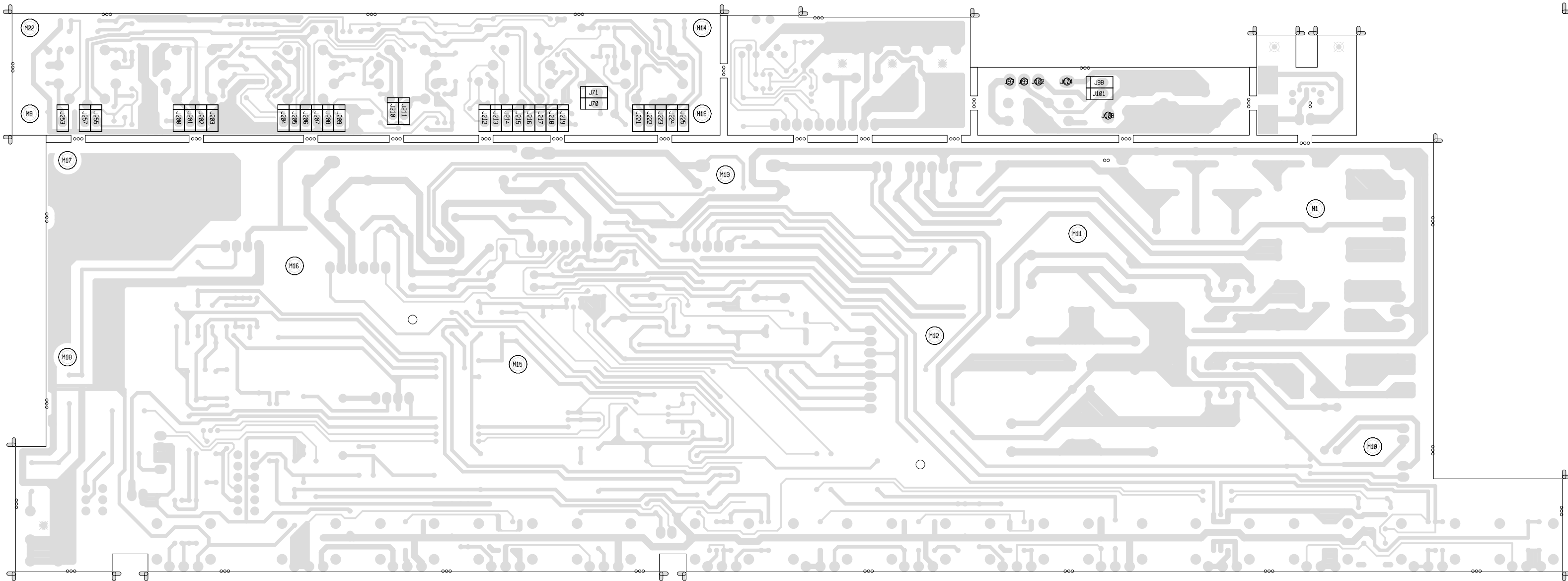


6505 PREAMP PRIMARY SIDE



6505 PREAMP SECONDARY SIDE

BILL OF MATERIALS REPORT

BOARD NAME: 6505 PREAMP REPORT DATE: 25JAN01
ASSEMBLY LEVEL NUMBER: 99010540 PROJECT NUMBER: P9700041
CBDS
PART PART DESCRIPTION AND
** QTY. NAME VALUE NUMBER DEVICE DESIGNATIONS *****

| | | | | | | | | |
|---|----------|----------|---------------------------------------|--------------|-----------|--------------|---------|-----|
| 2 | .001 | .001 | 70340000 | .001MF---- | 10%---- | 50VDC---- | MON---- | T&R |
| | | | C19, C48 | | | | | |
| 1 | .001R630 | .001R630 | 70320160 | .001MFD | 630VDC | B-BOX | | |
| | | | C2 | | | | | |
| 1 | .0022 | .0022 | 70340004 | .0022MF--- | 10%---- | 50VDC---- | T/C---- | T&R |
| | | | C13 | | | | | |
| 1 | .0033 | .0033 | 70340006 | .0033MF--- | 10%---- | 50VDC---- | T/C---- | T&R |
| | | | C10 | | | | | |
| 1 | .0047 | .0047 | 70340007 | .0047MF--- | 10%---- | 50VDC---- | MON---- | T&R |
| | | | C158 | | | | | |
| 3 | .0068 | .0068 | 70340008 | .0068MF--- | 10%---- | 50VDC---- | MON---- | T&R |
| | | | C12, C27, C60 | | | | | |
| 1 | .01 | .01 | 70340011 | .01MF----- | 10%---- | 50VDC---- | T/C---- | T&R |
| | | | C59 | | | | | |
| 3 | .01CD | .01CD | 70320248 | .01MF---- | 20%--- | 1000VDC--- | CD-- | T&A |
| | | | C32, C40, C45 | | | | | |
| 4 | .022 | .022 | 70340012 | .022MF---- | 10%---- | 50VDC---- | MON---- | T&R |
| | | | C18, C21, C154, C156 | | | | | |
| 8 | .022R400 | .022R400 | 70320106 | .022 MFD | 400V | RADIAL MYLAR | | |
| | | | C1, C6, C49, C52, C56, C57, C58, C165 | | | | | |
| 4 | .033 | .033 | 70340014 | .033MF---- | 10%---- | 50VDC---- | MON---- | T&R |
| | | | C55, C62, C155, C161 | | | | | |
| 4 | .047A400 | .047A400 | 70320105 | .047MFD | 450 VOLT | T&R CAP | | |
| | | | C11, C28, C29, C31 | | | | | |
| 1 | .068 | .068 | 70340018 | .068MF---- | 10%---- | 50VDC---- | MON---- | T&R |
| | | | C63 | | | | | |
| 4 | .1P10 | .1P10 | 70340101 | .1MF----- | 10%---- | 50VDC---- | MON---- | T&R |
| | | | C8, C54, C160, C162 | | | | | |
| 2 | .1R250MY | .1R250MY | 70320096 | .1 MFD | 250VDC | MYLAR CA/BR | | |
| | | | C15, C66 | | | | | |
| 3 | .33R400 | .33R400 | 70320107 | .33MF----- | 10%---- | 400VDC--- | MYLAR-- | R/W |
| | | | C53, C65, C153 | | | | | |
| 1 | .33SF2 | .33SF2 | 70330146 | .33MF | 5% 100VDC | SF T&A | | |
| | | | C157 | | | | | |
| 1 | 1.5K | 1.5K | 70240018 | 1.5K--1/4W-- | 5%---- | CF-- | T&R | |
| | | | R42 | | | | | |
| 2 | 1.5KW1 | 1.5KW1 | 70210007 | 1.5K--1W---- | 5%---- | MO-- | T&R | |
| | | | R70, R71 | | | | | |
| 3 | 1.82KP1 | 1.82KP1 | 70241078 | 1.82K-1/4W-- | 1%---- | CF-- | T&R | |
| | | | R12, R13, R17 | | | | | |

| | | | | | | | | |
|----|----------|----------|---|------------------------|-------------|----------------------------|---------|-----|
| 1 | 1000A35 | 1000A35 | 70320038 | 1000 MFD | 35VDC | LYTIC CAP | | |
| | | | C24 | | | | | |
| 4 | 1000R35 | 1000R35 | 70320186 | 1000MF---- | 20%---- | 35VDC-- | EL-- | T&A |
| | | | C9, C159, C163, C164 | | | | | |
| 7 | 100K | 100K | 70240034 | 100K--1/4W-- | 5%---- | CF-- | T&R | |
| | | | R33, R48, R58, R101, R103, R104, R171 | | | | | |
| 3 | 100KP1 | 100KP1 | 70240151 | 100K--1/4W-- | 1%---- | MF-- | T&R | |
| | | | R1, R3, R86 | | | | | |
| 1 | 100KW1 | 100KW1 | 70210017 | 100K--1W---- | 5%---- | MO-- | T&R | |
| | | | R16 | | | | | |
| 1 | 100PF | 100PF | 70340054 | 100PF----- | 10%---- | 50VDC---- | T/C---- | T&R |
| | | | C150 | | | | | |
| 2 | 100V350 | 100V350 | 70320130 | 100 MFD | 350VDC | RADIAL SNAP-IN | | |
| | | | C35, C39 | | | | | |
| 3 | 10A150 | 10A150 | 70320016 | 10 MFD | 150VDC | LYTIC - AXIAL LEAD | | |
| | | | C41, C42, C43 | | | | | |
| 1 | 10ASB | 10ASB | 70900599 | 10 AMP | S/B FUSE | WITH 2 FUSECLIPS #70900816 | | |
| | | | F2 | | | | | |
| 6 | 10K | 10K | 70240025 | 10K---1/4W-- | 5%---- | CF-- | T&R | |
| | | | R27, R156, R166, R167, R168, R169 | | | | | |
| 2 | 10KAVB | 71190528 | 71190528 | 10K | 20% AUD MIN | VPC W/BACKET | | |
| | | | VR12, VR15 | | | | | |
| 2 | 10KW1 | 10KW1 | 70210018 | 10K---1W---- | 5%---- | MO-- | T&R | |
| | | | R51, R61 | | | | | |
| 4 | 125SOWD | 70900788 | 70900788 | SPACER, 1/8,R(#4),.187 | SWAGE ALUM. | | | |
| | | | M9, M14, M19, M22 | | | | | |
| 6 | 12AX7 | 12AX7 | 70806612 | 12AX7 | VACUUM TUBE | W/9 PIN PC MNT SOCKET | | |
| | | | V1, V2, V3, V4, V5, V6 | | | | | |
| 1 | 12K | 12K | 70240057 | 12K---1/4W-- | 5%---- | CF-- | T&R | |
| | | | R68 | | | | | |
| 3 | 12VRELAY | 71322277 | 71322277 | DPDT | OMRON RELAY | 12VDC | | |
| | | | K1, K2, K3 | | | | | |
| 1 | 18K | 18K | 70240028 | 18K---1/4W-- | 5%---- | CF-- | T&R | |
| | | | R153 | | | | | |
| 3 | 1A50NP | 1A50NP | 70320138 | 1MFD | 10% 50VNP | EL T&R | | |
| | | | C3, C4, C5 | | | | | |
| 3 | 1AFB | 1AFB | 70900085 | AGC | 1 AMP FUSE | with 2 fuseclips #70900816 | | |
| | | | F3, F4, F5 | | | | | |
| 3 | 1K | 1K | 70240017 | 1K----1/4W-- | 5%---- | CF-- | T&R | |
| | | | R67, R80, R165 | | | | | |
| 20 | 1M | 1M | 70240039 | 1M----1/4W-- | 5%---- | CF-- | T&R | |
| | | | R9, R25, R26, R32, R40, R41, R50, R53, R72, R79, R84, R87, R88, R91, R100, R159, R160, R161, R162, R176 | | | | | |
| 2 | 1MAVB | 71190516 | 71190516 | 1 MEG | AUD MIN | VPC 20% W/BRKT | | |
| | | | VR5, VR10 | | | | | |

| | | | | | | | | |
|---|---------|----------|--|--------------|----------|---------------------|------|-----|
| 6 | 1MAVBP5 | 71190522 | 71190522 | 1 MEG | AUD MIN | VPC 5% TAPER W/BRKT | | |
| | | | VR1, VR2, VR6, VR7, VR11, VR14 | | | | | |
| 5 | 1N4003 | 1N4003 | 70464003 | 1N4003 | 200V | SILICON DIODE | | |
| | | | CR12, CR14, CR15, CR16, CR18 | | | | | |
| 4 | 1N4007 | 1N4007 | 70464007 | 1N4007 | 1KV, 1A, | SILICON DIODE | | |
| | | | CR8, CR9, CR10, CR11 | | | | | |
| 6 | 1N4148 | 4148 | 70464148 | 1N4148 | 75V 10MA | SILICON DIODE | | |
| | | | CR1, CR2, CR3, CR21, CR22, CR54 | | | | | |
| 4 | 2.2K | 2.2K | 70240020 | 2.2K--1/4W-- | 5%---- | CF-- | T&R | |
| | | | R93, R102, R155, R158 | | | | | |
| 1 | 2.2M | 2.2M | 70240040 | 2.2M--1/4W-- | 5%---- | CF-- | T&R | |
| | | | R81 | | | | | |
| 1 | 2.2R50 | 2.2R50 | 70320180 | 2.2MF----- | 20%---- | 50VDC--- | EL-- | T&A |
| | | | C166 | | | | | |
| 1 | 2.7K | 2.7K | 70240021 | 2.7K--1/4W-- | 5%---- | CF-- | T&R | |
| | | | R66 | | | | | |
| 1 | 210KP1 | 210KP1 | 70240137 | 210K | 1% 1/4W | MF T&R | | |
| | | | R2 | | | | | |
| 1 | 2200R35 | 2200V35 | 70320113 | 2200 MFD | 35VDC | RADIAL LYTIC | | |
| | | | C46 | | | | | |
| 9 | 220K | 220K | 70240036 | 220K--1/4W-- | 5%---- | CF-- | T&R | |
| | | | R4, R7, R54, R55, R85, R96, R150, R170, R172 | | | | | |
| 4 | 220KW1 | 220KW1 | 70210008 | 220K--1W---- | 5%---- | MO-- | T&R | |
| | | | R62, R63, R64, R65 | | | | | |
| 1 | 220R50 | 220R50 | 70320187 | 220MF----- | 20%---- | 50VDC--- | EL-- | T&A |
| | | | C64 | | | | | |
| 2 | 22A25 | 22A25 | 70320012 | 22MFD +/-20% | 25VDC | EL AXL | | |
| | | | C23, C30 | | | | | |
| 2 | 22A450 | 22A450 | 70320020 | 22 MFD | 450VDC | LYTIC CAP | | |
| | | | C33, C37 | | | | | |
| 3 | 22K | 22K | 70240029 | 22K---1/4W-- | 5%---- | CF-- | T&R | |
| | | | R44, R75, R174 | | | | | |
| 2 | 22KW1 | 22KW1 | 70210005 | 22K---1W---- | 5%---- | MO-- | T&R | |
| | | | R60, R173 | | | | | |
| 2 | 250KBVB | 71190515 | 71190515 | 250K | LIN MIN | VPC W/BACKET | | |
| | | | VR4, VR9 | | | | | |
| 1 | 25KAVB | 71190559 | 71190559 | 25KA | MIN | VPC W/BACKET | | |
| | | | VR3 | | | | | |
| 1 | 2AFB | 2AFB | 70900133 | AGC | 2 AMP | FUSE | | |
| | | | F1 | | | | | |
| 1 | 2N3919 | 3919 | 70463919 | SKA-3919 | TO92 | NPN TRANS T&A | | |
| | | | Q6 | | | | | |
| 1 | 3.3K | 3.3K | 70240022 | 3.3K--1/4W-- | 5%---- | CF-- | T&R | |
| | | | R14 | | | | | |

| | | | | |
|---|---------|----------|--|--------------------------------------|
| 1 | 330K | 330K | 70240037 | 330K--1/4W--5%----CF--T&R |
| | | | R11 | |
| 2 | 330V350 | 330V350 | 70320169 | 330 MFD 350 VDC VERT. SNAP-IN |
| | | | C34, C38 | |
| 3 | 33K | 33K | 70240030 | 33K---1/4W--5%----CF--T&R |
| | | | R94, R151, R163 | |
| 2 | 39K | 39K | 70240048 | 39K---1/4W--5%----CF--T&R |
| | | | R15, R56 | |
| 1 | 39PF | 39PF | 70340052 | 39PF-----50VDC----T/C----T&R |
| | | | C20 | |
| 4 | 4.7K | 4.7K | 70240023 | 4.7K--1/4W--5%----CF--T&R |
| | | | R57, R69, R73, R105 | |
| 2 | 4.7W1 | 4.7W1 | 70210015 | 4.7---1W----5%----MO--T&R |
| | | | R47, R49 | |
| 1 | 47 | 47 | 70240008 | 47----1/4W--5%----CF--T&R |
| | | | R83 | |
| 1 | 470 | 470 | 70240015 | 470---1/4W--5%----CF--T&R |
| | | | R52 | |
| 1 | 4700R35 | 4700R35 | 70350200 | 4700 MFD 35VDC RADIAL SNAP-IN |
| | | | C44 | |
| 7 | 470K | 470K | 70240038 | 470K--1/4W--5%----CF--T&R |
| | | | R6, R19, R82, R89, R152, R154, R164 | |
| 5 | 470PF | 470PF | 70340058 | 470PF-----10%----50VDC----T/C----T&R |
| | | | C14, C17, C51, C151, C152 | |
| 1 | 47A500 | 47A500 | 70320005 | 47MF 500VDC ELECTROLYTIC -AXIAL |
| | | | C36 | |
| 2 | 47FP | 47FP | 70240090 | 47FP--1/4W--5%----FP--T&R |
| | | | R76, R77 | |
| 3 | 47K | 47K | 70240031 | 47K---1/4W--5%----CF--T&R |
| | | | R24, R28, R95 | |
| 1 | 47W1 | 47W1 | 70210011 | 47----1W----5%----MO--T&R |
| | | | R37 | |
| 1 | 4KW5 | 4KW5 | 70250050 | 4K--5W--10%--WW--AXL |
| | | | R59 | |
| 9 | 500SOWD | 70900781 | 70900781 | SPACER, 1/2,R(#4),.187 SWAGE ALUM. |
| | | | M1, M10, M11, M12, M13, M15, M16, M17, M18, | |
| 1 | 50KBVB | 71190511 | 71190511 | 50K LIN MIN VPC W/BACKET |
| | | | VR8 | |
| 1 | 6.8K | 6.8K | 70240024 | 6.8K--1/4W--5%----CF--T&R |
| | | | R23 | |
| 4 | 6531 | 6531 | 70466531 | MPS-6531 TO92 NPN TRANS. T&A |
| | | | Q3, Q9, Q10, Q11 | |
| 2 | 68K | 68K | 70240032 | 68K---1/4W--5%----CF--T&R |
| | | | R22, R175 | |
| 1 | 68KP1 | 68KP1 | 70241070 | 68K---1/4W--1%----CF--T&R |

| | | | | |
|-----|----------|----------|---|---------------------------------------|
| | | | R5 | |
| 2 | 820 | 820 | 70240019 | 820---1/4W--5%----CF--T&R |
| | | | R38, R39 | |
| 1 | 820PF | 820PF | 70340062 | 820PF-----10%----50VDC----T/C----T&R |
| | | | C167 | |
| 2 | 82K | 82K | 70240033 | 82K---1/4W--5%----CF--T&R |
| | | | R46, R157 | |
| 1 | DIN7RA | 71466226 | 71466226 | CONN 7P R/A PCMNT DIN W/ 4 MNT. HOLES |
| | | | J6 | |
| 1 | DRASW | DRASW | 71322256 | PC MNT SWITCH DUAL |
| | | | S1 | |
| 3 | FMPU | 73711811 | 73711811 | M118-171 C.B. FEMALE MOLEX PIN |
| | | | J83, J84, J86 | |
| 2 | HIDMNI | 71466214 | 71466214 | 2 TIP HID JACK NINS W/SPD |
| | | | J96, J100 | |
| 2 | J174 | J174 | 70460174 | J-174 30V TO-92 P-CHAN FET T&A |
| | | | Q7, Q8 | |
| | | | | |
| 2 | LBRKT1 | 71500238 | 71500238 | #74 L-BRACKET W/4-40 HOLE |
| | | | M30, M31 | |
| 1 | LOMRELAY | 71322378 | 71322378 | RELAY, 12V DPDT - LO MIC |
| | | | K4 | |
| 1 | MAC97 | MAC97 | 70460097 | MAC97-6 400V .6A TO-92 TRIAC T&A |
| | | | CR23 | |
| 5 | MMPD | 73711812 | 73711812 | R93-12 PN C.B. MALE MOLEX PIN |
| | | | J97, J99, J102, J103, J104 | |
| 14 | MMPU | 73711812 | 73711812 | R93-12 PN C.B. MALE MOLEX PIN |
| | | | J15, J16, J72, J73, J74, J75, J76, J77, J78, J79, J80, J81, J82, J85 | |
| 1 | POT0452 | 71190452 | 71190452 | 10kb vpc 6.5mm |
| | | | VR16 | |
| 1 | PRASW | PRASW | 71322289 | DPDT P/P CB MNT SWITCH |
| | | | S2 | |
| 4 | RASN6165 | 71466165 | 71466165 | JK R/A 12.5MM NIN STEREO -88 |
| | | | J10, J165, J166, J167 | |
| 102 | SPX1 | SPX1 | 73717003 | 1 STAKE PIN |
| | | | J11, J12, J13, J14, J42, J43, J47, J48, J49, J50, J57, J58, J59, J60, J61, J62, J63, J70, J71, J98, J101, J105, J106, J107, J108, J150, J151, J152, J153, J154, J155, J156, J157, J158, J159, J160, J161, J162, J163, J168, J169, J170, J171, J172, J173, J200, J201, J202, J203, J204, J205, J206, J207, J208, J209, J210, J211, J212, J213, J214, J215, J216, J217, J218, J219, J220, J221, J222, J223, J224, J225, J226, J227, J228, J229, J230, J231, J232, J233, J234, J235, J236, J237, J238, J239, J240, J241, J242, J243, J244, J245, J246, J247, J248, J249, J252, J253, J254, J255, J256, J257, J258, | |

| | | | | |
|---|--------|--------|-------------------------------------|----------------------------|
| 1 | SW2328 | SW2328 | 71322328 | 2PTT PC MOUNT SLIDE SWITCH |
| | | | S3 | |
| | | | ***** | |
| | | | * END OF BILL OF MATERIALS REPORT * | |
| | | | ***** | |